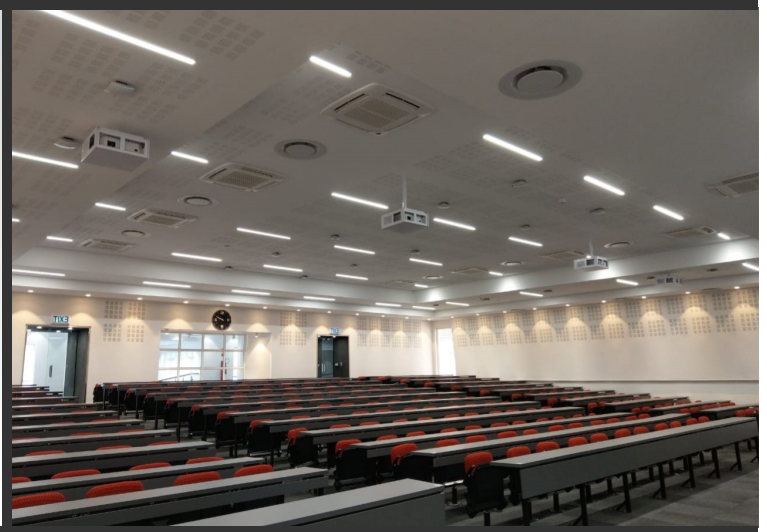
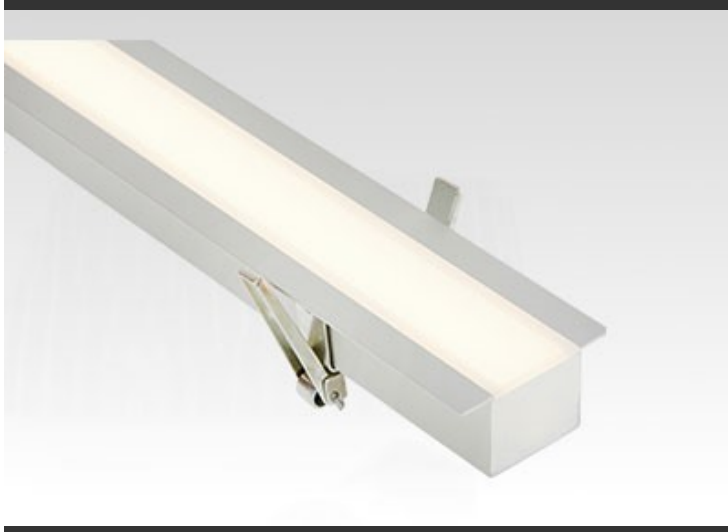


## PRODUCT SPECIFICATIONS SHEET

CATEGORY | Recessed Inlay Luminaires



## KEY FEATURES

- | Length options: 600mm / 1200mm
- | Wattage options: 20W / 40W
- | Diffuser material: Microprismatic
- | Housing colour options: Anodised / White
- | Mounting: Recessed / Tbar ceiling
- | Light colour options: WW (2700K) / NW (4000K) / CW (5700K)
- | LED type: Osram
- | LED chip efficacy: 180 Lumens per watt
- | Fitting efficacy : 110 Lumens per watt
- | Driver type: Tridonic
- | Dimming options : Non-dim / DALI
- | Warranty: 7 Years

## APPLICATIONS

- | Office
- | Arts and Culture
- | Shop and Retail
- | Education
- | Health and Care
- | Hotel and Wellness

## CERTIFICATIONS & FIXTURE RATINGS



**ISO9001**  
CERTIFIED

**IP20**

**7**Year  
WARRANTY

**General Disclaimer**  
Content is subject to change. Fluctuations in mains voltage and in LED forward voltage mean that lumen output and power draw may be subject to deviation (+/-5%) of rated value.

**Liability Disclaimer**  
The contents of this document are for information purposes only and may be subject to change without prior notice. LED Lighting SA can not be held liable for any direct or indirect damages as a result of this information.  
Copyright © LED Lighting 2019. All Rights Reserved.



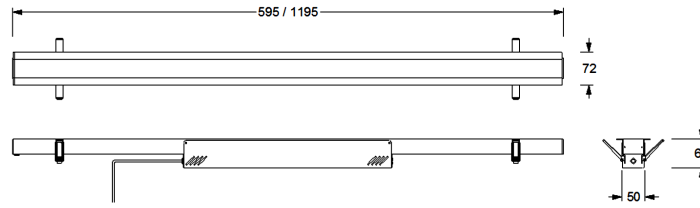
**CAPE TOWN**  
| 021 510 0028  
| sales@ledlighting.co.za



**DURBAN**  
| 031 566 5786  
| sales@ledlighting.co.za



**JOHANNESBURG**  
| 011 450 0494  
| sales@ledlighting.co.za



DIMENSIONS	Name	Draw Power (W)	Cut Out Diameter (mm)	Diameter (mm)	Height (mm)
		RI MT 20W 600	20	595	50
	RI MT 40W 1200	40	1195	50	64

GENERAL SPECIFICATIONS

GENERAL SPECIFICATIONS	DESCRIPTION	SPECIFICATION
		LED chip type
	LED operating current (mA)	116mA
	LED working life (L80 B10)	50 000hrs
	Driver type options	Tridonic
	Driver input voltage AC(V)	220V - 240VAC
	Driver power factor (pf)	>0.95λ
	Driver nominal-life	50 000hrs (Tc = 70°C)
	Driver dimming option	DALI
	Driver emergency power option	2.5hrs @ 10%
	Driver Total Harmonic Distortion (THD)	<20%
	Driver surge protection (kV)	2kV
	Driver compliance	EN 55015, EN 61000-3-2, EN 61000-3-3, EN 61347-1,
	IP rating	IP20
	SABS company certification	10089/15954
	SABS safety compliance	SABS 60598-2
	Operating temperature range	-20°C to + 40 °C
	Housing material	Acrylic / Aluminium
	Product weight including packaging	+/- 2.6kg (1200mm) / 1.55kg (600mm)
	Product weight excluding packaging	+/- 2.28kg (1200mm) / 1.35kg (600mm)
	Product warranty	7 Years

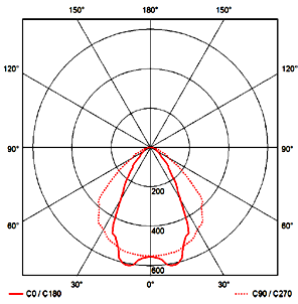
**General Disclaimer**  
Content is subject to change. Fluctuations in mains voltage and in LED forward voltage mean that lumen output and power draw may be subject to deviation (+/-5%) of rated value.

**Liability Disclaimer**  
The contents of this document are for information purposes only and may be subject to change without prior notice. LED Lighting SA can not be held liable for any direct or indirect damages as a result of this information.  
Copyright © LED Lighting 2019. All Rights Reserved.

**CAPE TOWN**  
| 021 510 0028  
| sales@ledlighting.co.za

**DURBAN**  
| 031 566 5786  
| sales@ledlighting.co.za

**JOHANNESBURG**  
| 011 450 0494  
| sales@ledlighting.co.za



RI MT Microprismatic

OPTICAL	NAME	DRAW POWER (W)	LED COLOUR (CCT)	COLOUR RENDERING INDEX (CRI)	LUMINOUS FLUX (LM)	EFFICIENCY (LM/W)	BEAM ANGLE
	RI MT 20W 600	20	2700k,4000k,5700k	85, 85, 80	1940 - 2300	97 - 115	Microprismatic
RI MT 40W 1200	40	2700k,4000k,5700k	85, 85, 80	3880 - 4600	97 - 115	Microprismatic	



Occupancy sensor (group control)



Emergency power gear



Tridonic ConnecDIM

**General Disclaimer**  
Content is subject to change. Fluctuations in mains voltage and in LED forward voltage mean that lumen output and power draw may be subject to deviation (+/-5%) of rated value.

**Liability Disclaimer**  
The contents of this document are for information purposes only and may be subject to change without prior notice. LED Lighting SA can not be held liable for any direct or indirect damages as a result of this information.  
Copyright © LED Lighting 2019. All Rights Reserved.



**CAPE TOWN**  
| 021 510 0028  
| sales@ledlighting.co.za



**DURBAN**  
| 031 566 5786  
| sales@ledlighting.co.za



**JOHANNESBURG**  
| 011 450 0494  
| sales@ledlighting.co.za